



interactive networked virtual reality system

Tutorial I

-

Medieval Town

Christoph Anthes

Roland Landertshamer

Marina Lenger



Overview

- Introduction
- Architecture Overview
- Tutorial
 - Overview
 - Step 1 – Basic Application Development
 - Step 2 – Navigation and Skybox
 - Step 3 – Transformation Management
 - Step 4 – Interaction
 - Step 5 – Using Network Communication
 - Step 6 – Developing own Application Logic
- Outlook
- Acknowledgements



Introduction and Architecture Overview



Introduction



- **inVRs** (interactive networked Virtual Reality system)
 - Pronounced **inVRs**
 - C++ Application Framework for Networked Virtual Environments (NVEs)
- Publicly available under www.invrs.org (under LGPL)
 - Uses Trac system for distribution
 - Alternatively latest stable release as zip
 - Available for Linux, Windows, Mac OS X and maybe IRIX
- Variety of out-of-the-box Features
 - Network communication supporting close coupled collaboration
 - Clear definition for navigation and interaction (with many techniques provided)
 - Designed for reusability of developed components
 - Easy-to-use configuration for immersive devices



Introduction



- Documentation available on Trac System
 - Several publications (BiBTeX files)
 - Tutorial examples
 - Medieval Town Tutorial (on which these slides are based on)
 - Programmers' Guide (coming soon)
 - Doxygen (<http://doxygen.invrs.org/>)
- Libraries
 - Required
 - OpenSG v1.8 (<http://www.opensg.org/>)
 - GMTL distributed with source (<http://ggt.sourceforge.net>)
 - IrrXML distributed with source (<http://www.ambiera.com/irrxml/>)
 - CMake (<http://www.cmake.org/>)
 - Optional
 - OpenAL and ALUT (<http://www.openal.org/>)
 - ODE (<http://www.ode.org/>)
 - trackD (comes with CAVELib)



Introduction



- Where to position *inVRs* in the development approaches for VR applications
 - Graphical Editors (using software components)
 - (e.g. EON, VirTools, Quest3D)
 - VR systems incorporating scripting languages
 - (e.g. DIVE, ALICE, AVOCADO)
 - Application Frameworks
 - (e.g. VRJuggler)
 - Scene Graphs
 - (e.g. OpenSG, OpenSceneGraph)
 - Full development from scratch via C or C++
 - OpenGL presents comparably high effort for new development of VR applications

- Application Areas



Safety Training



Collaborative Work



Entertainment



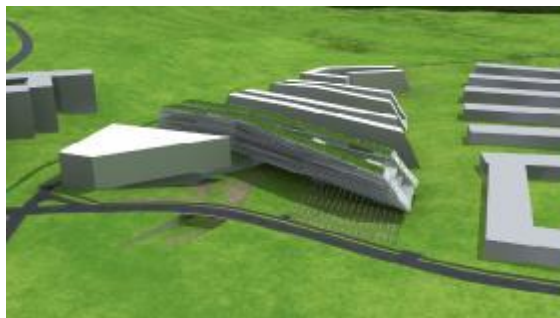
Art



Scientific Visualization



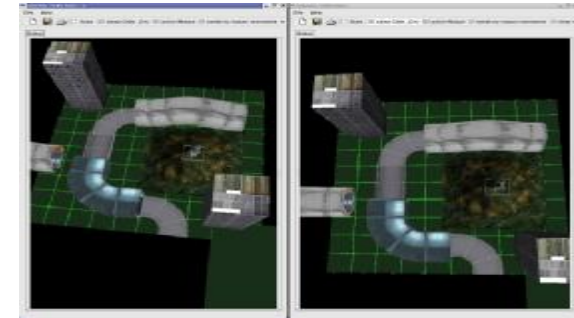
Education



Architecture Visualization



Product Presentation



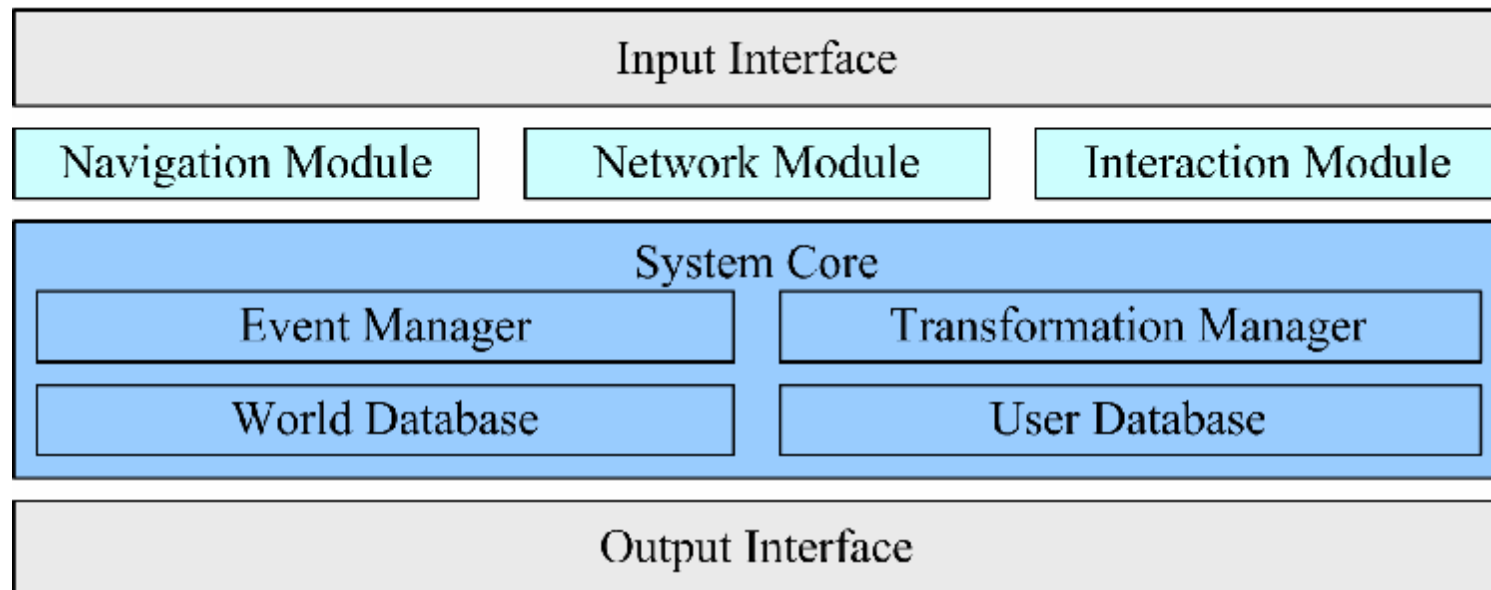
World Layout



Architecture Overview



- Overview – 3 different types of *inVRs* components
 - System Core (blue)
 - Modules (cyan)
 - Interfaces (grey)



- Communication typically happening top down in the diagram
- Strong dependencies between Interfaces and System Core
- Weak dependencies between Modules and other components



Architecture Overview



- System Core
 - System Core contains databases and communication mechanisms
 - Offers interface between external modules and databases
 - Core functionality (data types, configuration handling, logging, timer, etc.)
- Modules
 - Implemented as plugins
 - Follow a structured approach (init, loadConfig, cleanup, etc.)
 - Standard package contains modules for interaction, navigation, and network communication
 - Physics simulation and animation are available as additional modules
- Interfaces
 - Abstraction of input devices
 - Abstraction of graphical and audio output
 - On the graphics side only OpenSG is supported so far, plans to support OpenSceneGraph exist as well



Tutorial Structure



- The tutorial is based on many copy and paste operations in order to save time
- Four basic file classes are needed for this tutorial
 - MedievalTown.cpp
 - Contains the application parts from where the development can start
 - Configuration Files
 - Stored in the config subdirectories
 - Have to be altered through snippets (only in offline version with manual)
 - CodeFile - Snippets
 - Contain code snippets which should be copied into the MedievalTown.cpp source file
 - Can be found under the subdirectory snippets
 - ConfigFile - Snippets
 - Contain XML configuration which has to be copied in the actual configuration files (only in offline version with manual)
 - Can be found under the subdirectory snippets
- Open the file **MedievalTown.cpp** with the editor of your choice

Chapter 1

Basic Application Development

Where a simple OpenGL application makes use of the WorldDatabase in order to load the scene graph of a Medieval Town.



- Predefined Functions

- `void cleanup()`
 - System cleanup for OpenSG and later for inVRs
- `void display(void)`
 - Main display loop which is invoked by a GLUT callback.
- `void reshape(int w, int h)`
 - The method is used for reaction on changing of the window size.
- `void mouse(int button, int state, int x, int y)`
 - This method reacts to button presses of the mouse.
- `void motion(int x, int y)`
 - Forwards the coordinates of the mouse during mouse motion.
- `void keyboard(unsigned char k, int x, int y)`
 - This method reacts to keyboard input.
- `void keyboardUp(unsigned char k, int x, int y)`
 - Reacts on keyboard input. It is invoked when a key is released.
- `int setupGLUT(int *argc, char *argv[])`
 - Sets up the GLUT system and registers required callback functions.

- Writing a simple *inVRs* application using OpenSG and GLUT
 - OpenSG and a GLUT Window have to be initialized first

```
int main(int argc, char **argv) {
    osgInit(argc, argv);           // initialize OpenSG
    int winid = setupGLUT(&argc, argv); // initialize GLUT

    // the connection between GLUT and OpenSG is established
    GLUTWindowPtr gwin = GLUTWindow::create();
    gwin->setId(winid);
    gwin->init();
```

MedievalTown.cpp

- Create a simple OpenSG Node and set a Group Core. Attach it to the scene.

```
NodePtr root = Node::create();
beginEditCP(root);
    root->setCore(Group::create());
endEditCP(root);

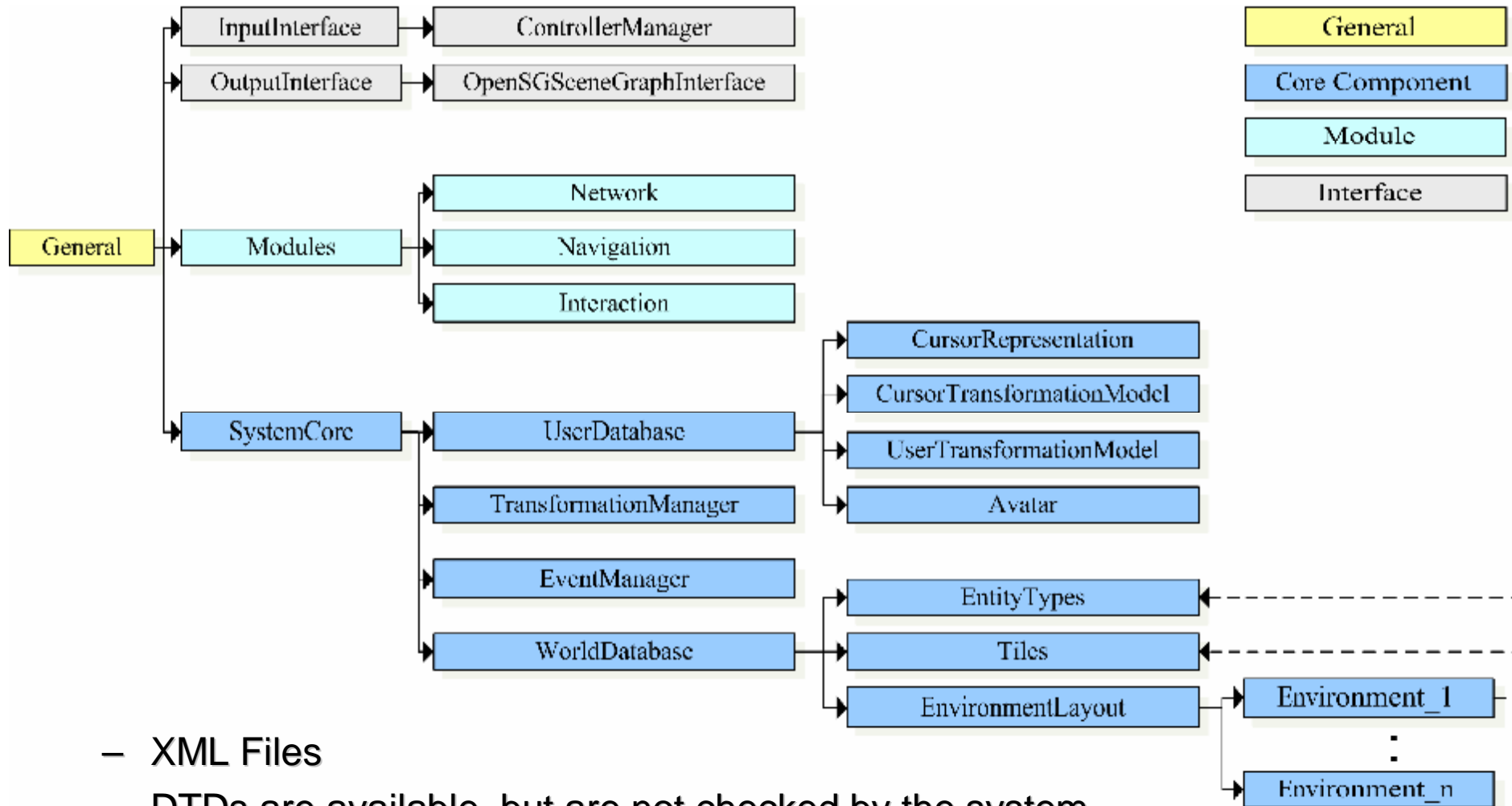
mgr = new SimpleSceneManager; // create the SimpleSceneManager
mgr->setWindow(gwin);         // tell the manager what to manage
mgr->setRoot(root);           // attach the scenegraph to the root node
mgr->showAll();                // show the whole scene
mgr->getCamera()->setNear(0.1);

glutMainLoop(); // GLUT main loop
return 0;
}
```

MedievalTown.cpp



- Configuring *inVRs*



- Configuring *inVRs*
 - **general.xml** sets up *inVRs* components (in <general>) and all system paths (in <paths>), you have to update your own plugin path here.
 - Paths refer to other configurations, models and tools

```
<?xml version="1.0"?>
<!DOCTYPE generalConfig SYSTEM "http://dtd.inVRs.org/generalConfig_v1.0a4.dtd">
<generalConfig version="1.0a4">
  <!-- This is the configuration for the inVRs Framework -->
  <general>

<!-- ***** Snippet-2-1 ***** -->

    <Interfaces>
      <option key="outputInterfaceConfiguration" value="outputInterface.xml"/>
    </Interfaces>
    <SystemCore>
      <option key="systemCoreConfiguration" value="systemCore.xml"/>
    </SystemCore>
  </general>
  <paths>
    <root directory="."/ />
    <path name="Plugins"
      directory="/please/insert/your/inVRs/libs/path/here/" />
    <path name="SystemCoreConfiguration" directory="config/systemcore/" />
    <path name="OutputInterfaceConfiguration"
```

general.xml



- Loading *inVRs* Configuration Data
 - Load the general configuration of the *inVRs* framework
 - Call the loadConfig method with the configuration setup at which we had a look at on the previous slide

```
// very first step: load the configuration of the file structures, basically
// paths are set. The Configuration always has to be loaded first since each
// module uses the paths set in the configuration-file
if (!Configuration::loadConfig("config/general.xml")) {
    printf("Error: could not load config-file!\n");
    return -1;
}
```

Snippet 1-1

- After having set the paths of the needed components the core configuration is to be triggered
- Triggering this configuration in general results in subsequent internal configure calls, for example for the individual core components, the components of the interfaces or the registered modules



- Triggering the Configuration and Adding a Scene
 - This call causes the *inVRs* system to fill the WorldDatabase with its data
 - The medieval town is loaded at this stage
 - The interface to the OpenSG scene graph is established in this step as well

```
std::string systemCoreConfigFile = Configuration::getString(
    "SystemCore.systemCoreConfiguration");
std::string outputInterfaceConfigFile = Configuration::getString(
    "Interfaces.outputInterfaceConfiguration");

// !!!!!!! Remove in tutorial part 2, Snippet-2-1 - BEGIN
if (!SystemCore::configure(systemCoreConfigFile, outputInterfaceConfigFile)) {
    printf("Error: failed to setup SystemCore!\n");
    return -1;
}
// !!!!!!! Remove - END
```

Snippet 1-2

- Interconnecting OpenSG and *inVRs*
 - Request the SceneGraphInterface from the OutputInterface
 - Retrieve the root node of the scene graph interface
 - Attach it to the to the root node of our so far empty OpenSG scene



```
OpenSGSceneGraphInterface* sgIF =
    dynamic_cast<OpenSGSceneGraphInterface*>(OutputInterface::
        getSceneGraphInterface());
if (!sgIF) {
    printf("Error: Failed to get OpenSGSceneGraphInterface!\n");
    printf("Please check if the OutputInterface configuration is correct!\n");
    return -1;
}
// retrieve root node of the SceneGraphInterface (method is OpenSG specific)
NodePtr scene = sgIF->getNodePtr();

root->addChild(scene);
```

Snippet 1-3

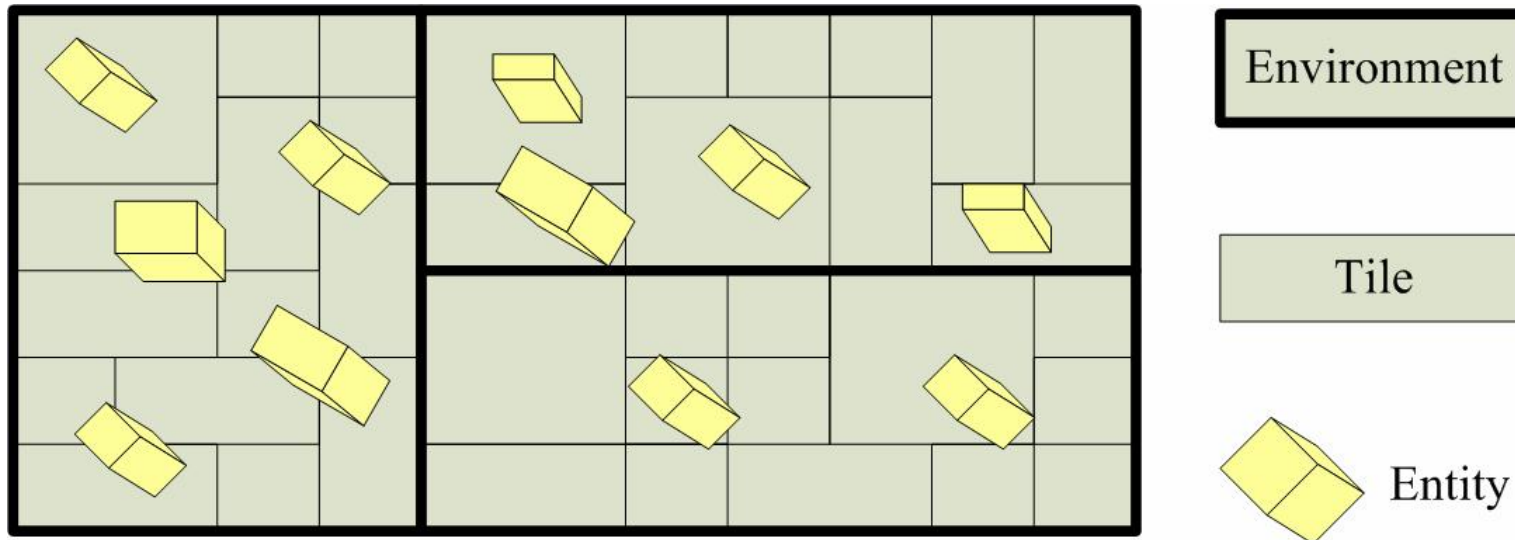
- Cleaning Up
 - Since we have instantiated the *inVRs* SystemCore, including its sub-components we have to clean up at exit
 - Insert the following snippet in the cleanup method

```
SystemCore::cleanup(); // clean up SystemCore and registered components
```

Snippet 1-4

- Recompile and Run
 - You should now see a medieval town behind a black background
 - A basic navigation is provided by the OpenSG SimpleSceneManager

- Working with the World Database
 - An *inVRs* VE consists of Environments, Entities and Tiles

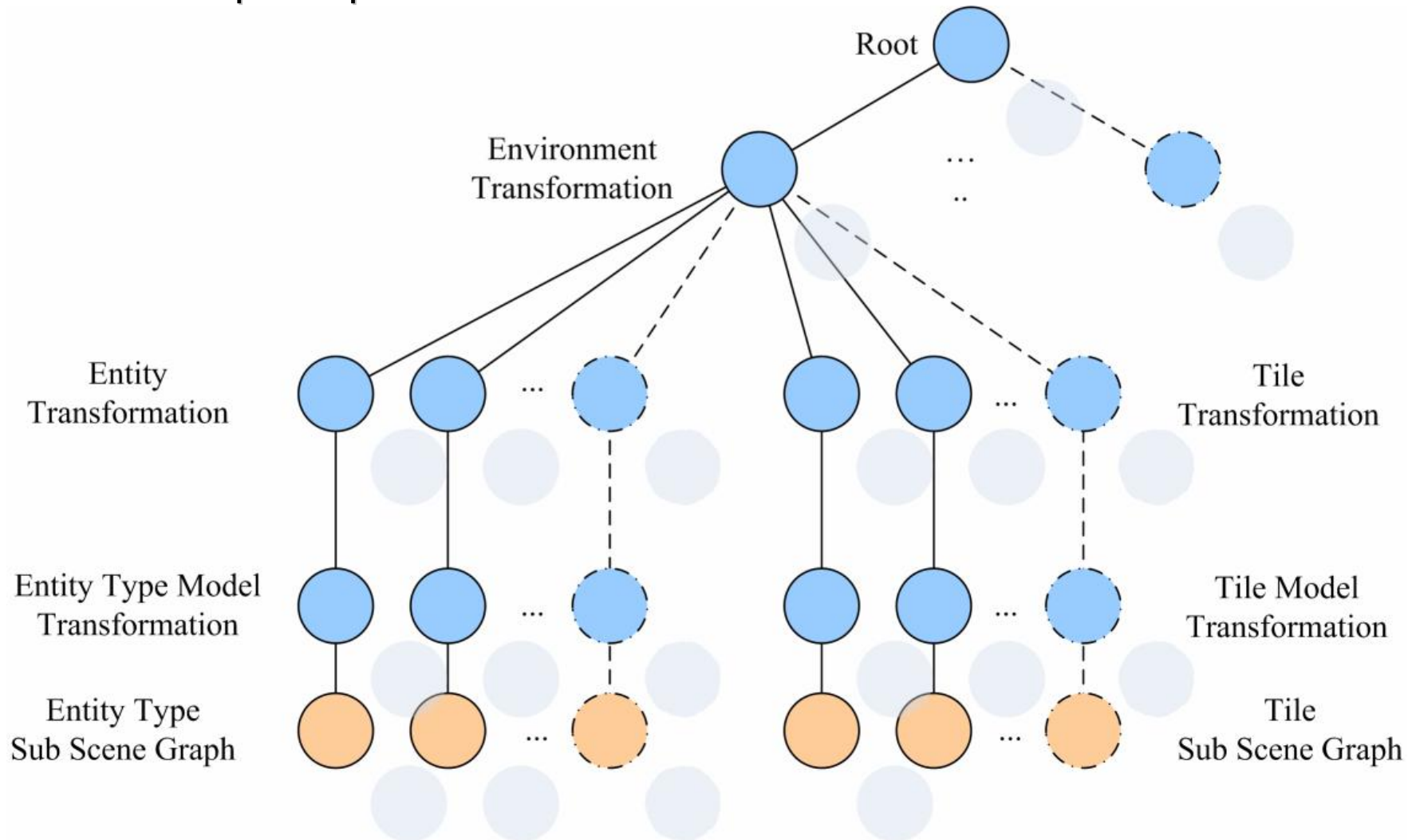


- They are typically used for partitioning and functionality (Entities) in the VE
- Configurations for these types are stored in `worldDatabase.xml`

```
<?xml version="1.0"?>
<!DOCTYPE worldDatabase SYSTEM "http://dtd.inVRs.org/worldDatabase_v1.0a4.dtd">
<worldDatabase version="1.0a4">
  <entityTypes configFile="entities.xml"/>
  <tiles configFile="tiles.xml"/>
  <environmentLayout configFile="environmentLayout.xml"/>
</worldDatabase>
```

worldDatabase.xml

- Scene Graph Representation





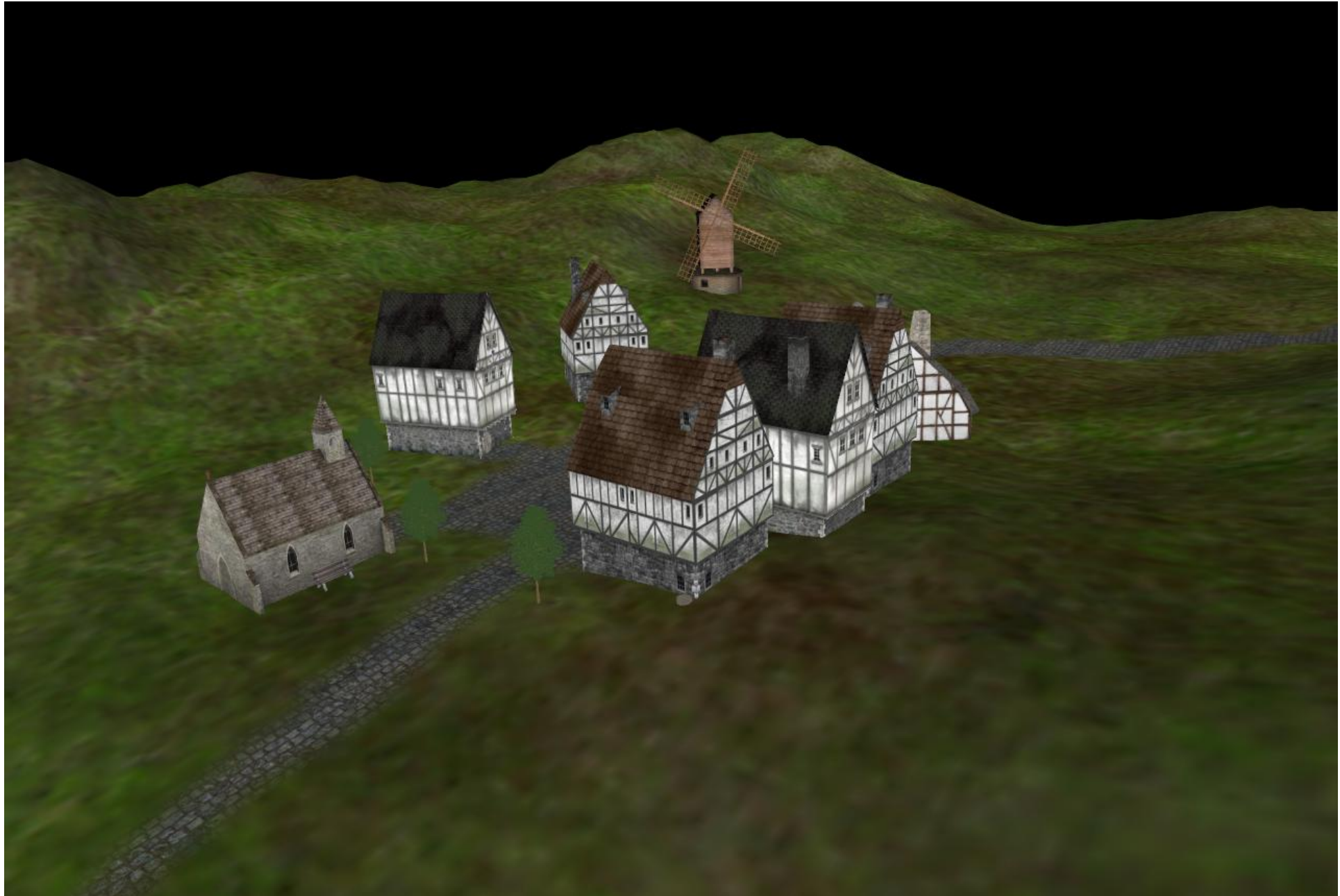
JOHANNES KEPLER
UNIVERSITÄT LINZ

Netzwerk für Forschung, Lehre und Praxis

Basic Application Development



interactive networked virtual reality system



Chapter 2

Navigation and Skybox

Where new *inVRs* components will be added, the user is able to travel through the scene and the environment is lightened up.



Navigation and Skybox



- Adding *inVRs* Components
 - In order to use the navigation several components are needed
 - The Navigation module – to provide new user or camera coordinates
 - The InputInterface – to gather input from devices and expose it to the Navigation module
 - The UserDatabase – to set camera and user transformations
 - The TransformationManager – to pass the transformations generated by the Navigation module to the UserDatabase
 - This requires
 - Setting up the configurations of these components if they are not already provided
 - Registering these components unless they are core components
 - Implementing callbacks to access these components during the initialization



Navigation and Skybox



- Adding *inVRs* Components

- The configuration-files for the two component types, the InputInterface and the modules, have to be set as well at the top of general.xml

```
<Modules>  
  <option key="modulesConfiguration" value="modules.xml" />  
</Modules>  
<Interfaces>  
  <option key="inputInterfaceConfiguration" value="inputInterface.xml" />  
</Interfaces>
```

general.xml

- Interfaces and modules are available as individual libraries
- They can be loaded as plugins
- The paths provided in this snippet define the location where the configuration files for these component types are located

```
<path name="InputInterfaceConfiguration" directory="config/inputinterface/" />  
<path name="ModulesConfiguration" directory="config/modules/" />
```

general.xml

- Adding *inVRs* Components

- The paths for the configurations of the individual components, not to be mixed up with the component types, have to be provided in general.xml

```
<!-- Path for Interfaces Datastructure -->
<path name="ControllerManagerConfiguration"
  directory="config/inputinterface/controllermanager/" />

<!-- Paths for Module Datastructure -->
<path name="NavigationModuleConfiguration"
  directory="config/modules/navigation/" />
```

general.xml

- More configuration paths have to be set, since we are working in this chapter with the UserDatabase and later on with the representation of the user too

```
<avatar configFile="avatar.xml"/>
```

userDatabase.xml

- In the module configuration file the Navigation modules configuration file has to be provided

```
<module name="Navigation" configFile="navigation.xml" />
```

modules.xml

- The configuration of the system might seem cumbersome so far, typically standard configurations are used and only single parts for components are to be exchanged



Navigation and Skybox



- Adding *inVRs* Components
 - Initialization process has to be changed
 - Paths for modules and interfaces are requested
 - The interfaces and the modules have to be configured as well
 - Thus the overloaded configure function is used

```
// !!!!!!! Remove part of Snippet-1-2 (right above)
// in addition to the SystemCore config file, modules and interfaces config
// files have to be loaded.
std::string modulesConfigFile = Configuration::getString(
    "Modules.modulesConfiguration");
std::string inputInterfaceConfigFile = Configuration::getString(
    "Interfaces.inputInterfaceConfiguration");

if (!SystemCore::configure(systemCoreConfigFile, outputInterfaceConfigFile,
    inputInterfaceConfigFile, modulesConfigFile)) {
    printf("Error: failed to setup SystemCore!\n");
    printf("Please check if the Plugins-path is correctly set to the inVRs-lib
        directory in the ");
    printf("'final/config/general.xml' config file, e.g.:\n");
    printf("<path name=\"Plugins\" path=\"/home/guest/inVRs/lib\"/>\n");
    return -1;
}
```

Snippet 2-1

- Watch out with inserting this snippet code, parts above have to be removed



- Adding *inVRs* Components
 - Both callbacks request pointers to the components at the initialization

```
void initInputInterface(ModuleInterface* moduleInterface) {  
    // store ControllerManger and the Controller as soon as the ControllerManager  
    // is initialized  
    if (moduleInterface->getName() == "ControllerManager") {  
        controllerManager = (ControllerManager*)moduleInterface;  
        controller = (Controller*)controllerManager->getController();  
    }  
}
```

Snippet 2-2

- Watch out when inserting this snippet, it contains cross references to others

```
void initModules(ModuleInterface* module) {  
    // store the Navigation as soon as it is initialized  
    if (module->getName() == "Navigation") {  
        navigation = (Navigation*)module;  
    }  
    //-----//  
    // Snippet-4-1 //  
    //-----//  
  
    //-----//  
    // Snippet-5-1 //  
    //-----//  
}
```

Snippet 2-3



Navigation and Skybox



- Adding *inVRs* Components
 - Finally the callback functions for the interfaces and the modules have to be registered

```
// register callbacks  
InputInterface::registerModuleInitCallback(initInputInterface);  
SystemCore::registerModuleInitCallback(initModules);
```

Snippet 2-4

- As with the XML configuration this approach might seem cumbersome, but is very generic and can be avoided by using an additional helper class
- This helper class is introduced in the following tutorial the *Going Immersive Tutorial*



Navigation and Skybox

- Navigation Concepts
 - Navigation or travel consists of three independent models
 - Speed
 - Orientation
 - Translation
 - Are composed by the Navigation module in order to create a resulting transformation
 - This transformation is to be passed on an object (e.g. camera, avatar)
 - Typically the camera is used, but effects like dangling camera as known from third-person VEs can be implemented easily
 - Each model takes data from an abstract controller which is part of the input interface
 - The controller takes input from devices and exposes it as
 - Buttons (boolean values)
 - Axes (linear values)
 - Sensors (6DOF position and orientation values)



Navigation and Skybox

- Implementing Navigation
 - At first gather pointers to the relevant objects
 - User
 - Camera
 - Avatar
 - The camera and the avatar object are retrieved from the user object
 - In our case we are working with the local user
 - These objects can be retrieved as well from remote users once they are connect and the data is stored in the UserDatabase
 - The display of the avatar is set to false
 - The initial transformation of the user is retrieved from the environment
 - The entryPoint as described in the previous chapter is taken into account
 - This transformation is then set on the navigated transformation of the user object



- Implementing Navigation

```
// fetch users camera, it is used to tell the Navigator where we are
localUser = UserDatabase::getLocalUser();
if (!localUser) {
    printf(ERROR, "Error: Could not find localUser!\n");
    return -1;
}

camera = localUser->getCamera();
if (!camera) {
    printf(ERROR, "Error: Could not find camera!\n");
    return -1;
}

avatar = localUser->getAvatar();
if (!avatar) {
    printf(ERROR, "Error: Could not find avatar!\n");
    return -1;
}
avatar->showAvatar(false);

// set our transformation to the start transformation
TransformationData startTrans =
    WorldDatabase::getEnvironmentWithId(1)->getStartTransformation(0);
localUser->setNavigatedTransformation(startTrans);
```

Snippet 2-5



Navigation and Skybox

- Implementing Navigation
 - The OpenSG SimpleSceneManager functionality has to be decoupled
 - Pointer to the Navigator is retrieved from the manager and disabled
 - A Timer is initialized
 - The camera matrix is initialized

```
// Navigator is part of SimpleSceneManager and not of the inVRs framework
Navigator *nav = mgr->getNavigator();
nav->setMode(Navigator::NONE); // turn off the navigator
lastTimeStamp = timer.getTime(); // initialize timestamp;
camMatrix = gmtl::MAT_IDENTITY44F; // initial setting of the camera matrix
```

Snippet 2-6

- Navigation and input processing, as well as timer updates and transformation management has to take place on a per-frame basis
- The display() - method which was registered as GLUT callback has to be altered



- Implementing Navigation
 - The timestamp is updated and a delta value describing the time difference from the last update is set
 - The abstract controller is updated
 - Devices are polled and their values are exposed
 - Navigation is updated based on these values
 - The TransformationManager processes the navigation
 - The transformation matrix of the *inVRs* camera is requested

```
float currentTimeStamp;  
Matrix osgCamMatrix;  
float dt; // time difference between currentTimeStamp and lastTimeStamp  
  
currentTimeStamp = timer.getTime(); //get current time  
dt = currentTimeStamp - lastTimeStamp;  
  
controller->update(); // poll/update associated devices  
navigation->update(dt); // update navigation  
  
// process transformations which belong to the pipes with priority 0x0E000000  
TransformationManager::step(dt, 0x0E000000);  
  
camera->getCameraTransformation(camMatrix); // get camera transformation Snippet 2-7
```



Navigation and Skybox



- Implementing Navigation
 - The *inVRs* camera matrix is converted in to a OpenSG camera matrix
 - The navigator of the SimpleSceneManager is requested
 - The converted matrix is set in the navigator
 - The TransformationManager is invoked to process the remaining transformations (more detail on this in the next chapter)
 - The timeStamp is kept as the previous timeStamp

```
set(osgCamMatrix, camMatrix);           // convert gmtl matrix into OpenSG matrix

Navigator* nav = mgr->getNavigator();
nav->set(osgCamMatrix);                   // plug new camera matrix into navigator

TransformationManager::step(dt);         // process the remaining pipes

lastTimeStamp = currentTimeStamp;
```

Snippet 2-8



Navigation and Skybox



- Decoupling the OpenSG Input – Integrating *inVRs* Input Handling
 - Alter the predefined GLUT – callback functions
 - Data is now passed to *inVRs* (GlutMouseDevice and GlutKeyboardDevice) instead of the SimpleSceneManager
 - Gather knowledge on current window size for calculation of the cursor position

```
// the mouse device must be aware of the window size in pixel  
GlutMouseDevice::setWindowSize(w, h);
```

Snippet 2-9

- Poll the mouse button state

```
// (replace the lines above in this function) instead of calling the  
// SimpleSceneManager we delegate the message to our mouse device  
GlutMouseDevice::cbGlutMouse(button, state, x, y);
```

Snippet 2-10

- Gather input on the mouse movement

```
// (replace the lines above in this function) instead of calling the  
// SimpleSceneManager we delegate the message to our mouse device  
GlutMouseDevice::cbGlutMouseMove(x, y);
```

Snippet 2-11

- Gather input on pressed keyboard keys

```
// notify keyboard device about GLUT message  
GlutCharKeyboardDevice::cbGlutKeyboard(k, x, y);
```

Snippet 2-12



Navigation and Skybox



- Decoupling the OpenSG Input – Integrating *inVRs* Input Handling
 - Additional keys should be checked to trap the mouse cursor in the active window

```
// grab the mouse
case 'm':
case 'M': {
    grabMouse = !grabMouse;
    GlutMouseDevice::setMouseGrabbing(grabMouse);
} break;
```

Snippet 2-13

- Gather input on released keyboard keys

```
GlutCharKeyboardDevice::cbGlutKeyboardUp(k, x, y);
```

Snippet 2-14

- Configuring the Navigation
 - Each model has its specific configuration
 - Typically the arguments passed to the models perform a mapping from the abstract input into model specific parameters
 - Setup in navigation.xml
 - Many predefined models exist



- Configuring the Navigation

```
<?xml version="1.0"?>
<!DOCTYPE navigation SYSTEM "http://dtd.inVRs.org/navigation_v1.0a4.dtd">
<navigation version="1.0a4">
  <translationModel type="TranslationViewDirectionButtonStrafeModel">
    <arguments>
      <arg key="frontIndex" type="uint" value="3"/>
      <arg key="backIndex" type="uint" value="4"/>
      <arg key="leftIndex" type="uint" value="5"/>
      <arg key="rightIndex" type="uint" value="6"/>
    </arguments>
  </translationModel>
  <orientationModel type="OrientationDualAxisModel" angle="20">
    <arguments>
      <arg key="xAxisIndex" type="int" value="0"/>
      <arg key="yAxisIndex" type="int" value="1"/>
      <arg key="buttonIndex" type="int" value="1"/>
    </arguments>
  </orientationModel>
  <speedModel type="SpeedMultiButtonModel" speed="10">
    <arguments>
      <arg key="accelButtonIndices" type="string" value="3 4 5 6"/>
    </arguments>
  </speedModel>
</navigation>
```

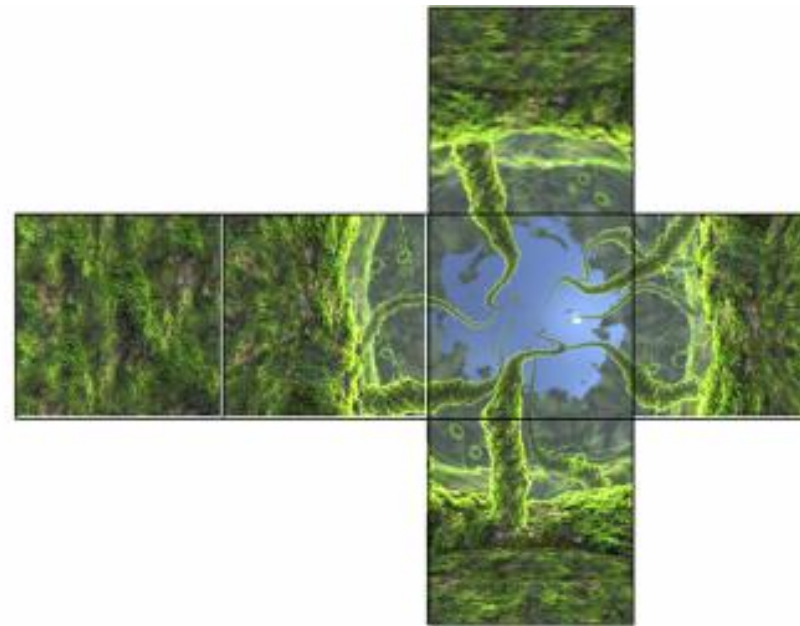
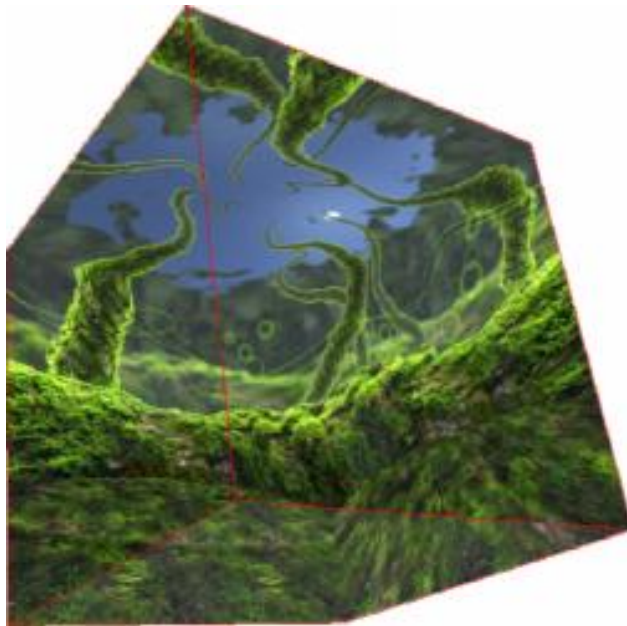
navigation.xml



Navigation and Skybox



- Skybox Tool
 - Skyboxes are used to represent scene surroundings
 - Skyboxes move with the camera
 - The Skybox orientation is always fixed to the scene
 - Typically 6 textures mapped on cubes, *inVRs* offers different box shapes





- Adding a Skybox
 - The path is retrieved from the configuration and a skybox is set up with 6 image files
 - Dimensions and far clipping plane have to be set as well

```
// generate and configure the SkyBox
std::string skyPath = Configuration::getPath("Skybox");
skybox.init(5,5,5, 1000, (skyPath+"lostatseaday/lostatseaday_dn.jpg").c_str(),
    (skyPath+"lostatseaday/lostatseaday_up.jpg").c_str(),
    (skyPath+"lostatseaday/lostatseaday_ft.jpg").c_str(),
    (skyPath+"lostatseaday/lostatseaday_bk.jpg").c_str(),
    (skyPath+"lostatseaday/lostatseaday_rt.jpg").c_str(),
    (skyPath+"lostatseaday/lostatseaday_lf.jpg").c_str());
```

Snippet 2-15

- The Skybox is internally generated and a node pointer containing the Skybox scene graph is requested
- This node is attached to the top node of the scene

```
root->addChild(skybox.getNodePtr());
```

Snippet 2-16

- The box position is set to the camera position

```
skybox.setupRender(camera->getPosition());
```

Snippet 2-17

- Compile and run



JOHANNES KEPLER
UNIVERSITÄT LINZ

Netzwerk für Forschung, Lehre und Praxis

Navigation and Skybox



interactive networked virtual reality system



Chapter 3

Transformation Management

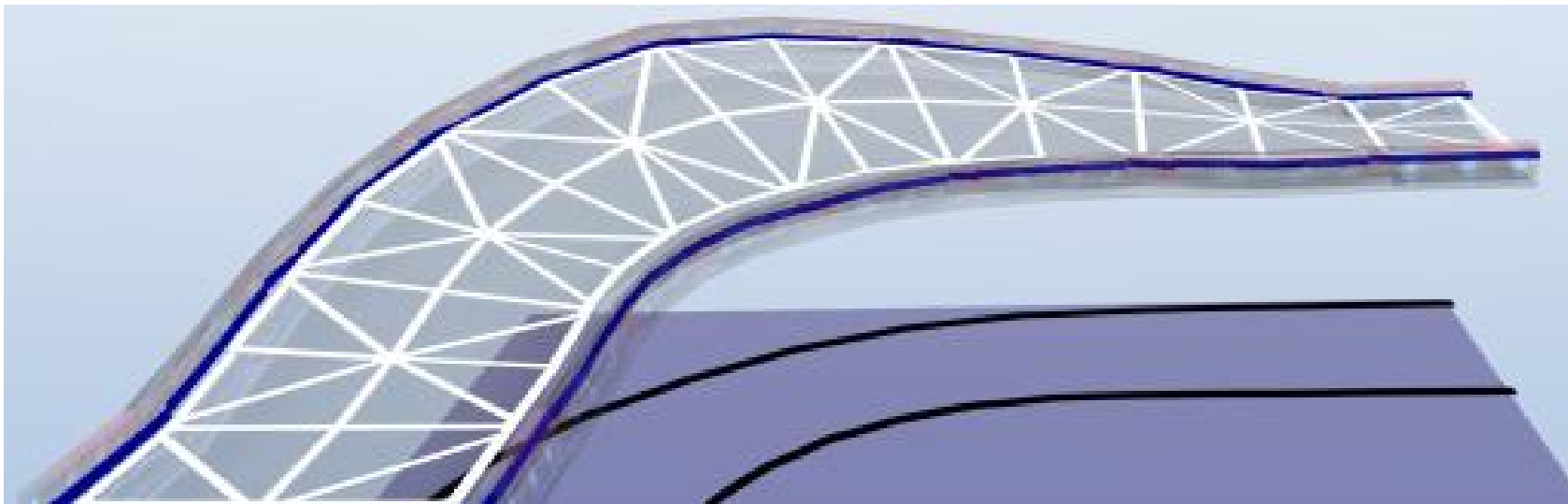
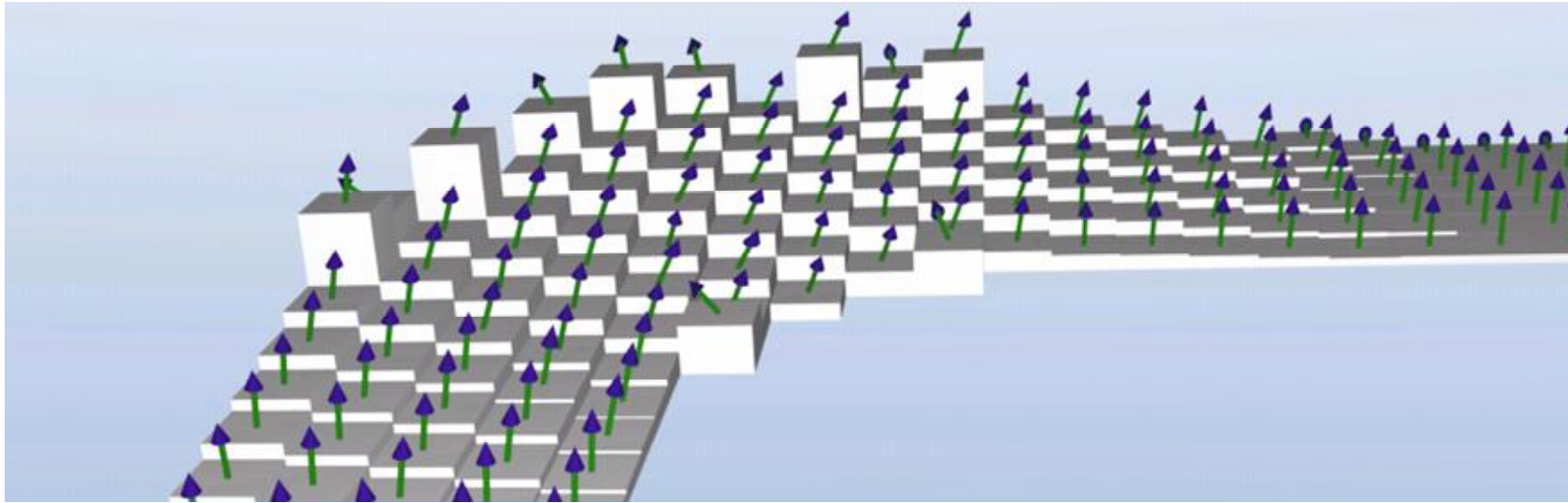
Where the navigation results are altered that the terrain can be followed and collisions with the buildings can be detected and resolved.



- Height Maps and Collision Maps
 - Height maps
 - 2D Grid structure defining the height value underneath a 3D geometry
 - Additional normal vectors are provided which describe the orientation of the triangles at given grid location
 - Collision Maps
 - Line sets defining non-passable areas in a VE
 - Mapping from 3D objects on a plane
 - Plane is placed in the scene
 - Lines are drawn where geometries at a defined height are cut
 - Both are implemented as modifiers and can alter the generated transformation matrix



- Height Maps and Collision Maps





- Generating Height Maps
 - Either offline or online
 - Take tiles as input
 - If height maps have to be generated during runtime this can take a significant amount of time
 - In case no pre-defined height map is available for a tile and the method generate is called a height map will be automatically created
 - The geometry of a tile sampled and the grid is generated

```
HeightMapManager::generateTileHeightMaps();
```

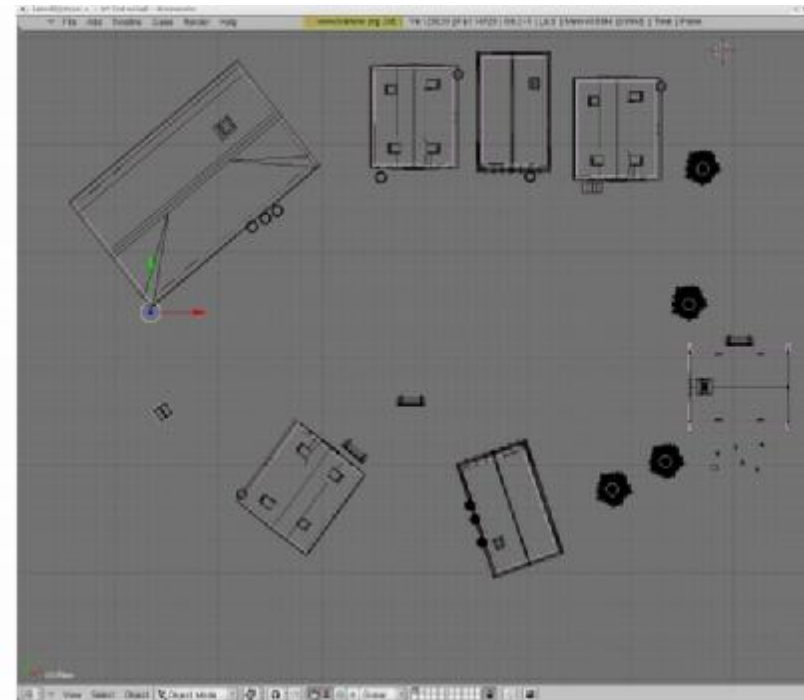
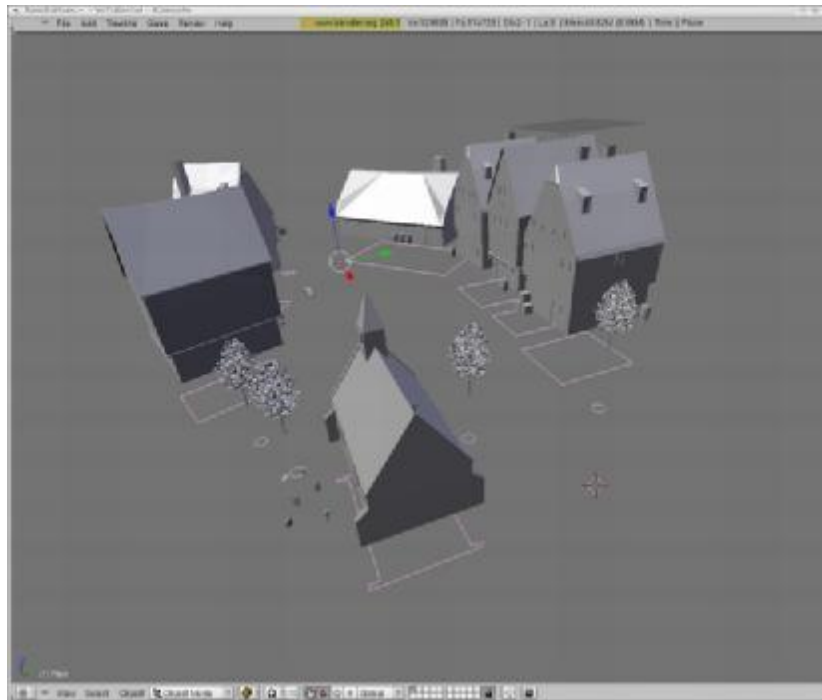
Snippet 3-1

- Generating Collision Maps
 - Always have to be created offline
 - Can be generated automatically by an external tool
 - Modeling tools (e.g. Blender, MAYA, 3D Max) are often used to manually draw collision lines



Transformation Management

- Generating Collision Maps
 - Typically the final scene is dumped to disk from the application
 - It is loaded into the modeling tool
 - The lines are drawn from top view
 - The line sets are again written to disc in a VRML file format





Transformation Management



- Transformation Manager Architecture
 - Consists of Pipes and Modifiers
 - TransformationData is sent from a source component to a destination component via the TransformationManager
 - At the destination component the transformation is to be applied on a target
- Pipes
 - Transformations are routed through pipes inside the transformation manager
 - Have a key consisting of source and destination component, target, received from network, etc.
 - Have several stages where the transformation can be modified
- Modifiers
 - Pipe stage
 - Different types e.g. for reading and writing data from and to external components exist



- Setting up the Transformation Manager
 - Pipe is identified by a key
 - Contains list of modifiers

```

<?xml version="1.0"?>
<!DOCTYPE transformationManager SYSTEM "http://dtd.inVRs.org/
  transformationManager_v1.0a4.dtd">
<transformationManager version="1.0a4">
  <mergerList/>
  <pipeList>
    <pipe srcComponentName="NavigationModule"
      dstComponentName="TransformationManager" pipeType="Any"
      objectClass="Any" objectType="Any" objectId="Any"
      fromNetwork="0">
      <modifier type="ApplyNavigationModifier"/>

<!-- ***** Snippet-3-1 ***** -->

<!-- ***** Snippet-3-2 ***** -->

<!-- ***** Snippet-5-3 ***** -->

      <modifier type="UserTransformationWriter"/>
      <modifier type="CameraTransformationWriter">

<!-- ***** Snippet-3-3 ***** -->

```

modifiers.xml



- Integrating the Height Maps and Collision Maps
 - Height map modifier has to be integrated after the navigated transformation is put in the pipe

```
<modifier type="HeightMapModifier" />
```

modifiers.xml

- CheckCollisionModifier is applied afterwards
- Radius for collision detection is to be set
- Filename of the collision map has to be provided

```
<modifier type="CheckCollisionModifier">  
  <arguments>  
    <arg key="radius" type="float" value="1" />  
    <arg key="fileName" type="string" value="MedievalTownCollisionMap.wrl"/>  
  </arguments>  
</modifier>
```

modifiers.xml

- The height of the camera has to be modified

```
<arguments>  
  <arg key="cameraHeight" type="float" value="1.8"/>  
  <arg key="useGlobalYAxis" type="bool" value="true"/>  
</arguments>
```

modifiers.xml



Transformation Management



- Adding the Transformation Managers' Setup
 - The factories for generating the used modifiers have to be registered since the modifiers are not provided as core features
 - All additional modifiers which are not provided by the SystemCore have to register their factories at the initialization callback

```
void initCoreComponents(CoreComponents comp) {  
    // register factory for HeightMapModifier as soon as the  
    // TransformationManager is initialized  
    if (comp == TRANSFORMATIONMANAGER) {  
        TransformationManager::registerModifierFactory  
            (new HeightMapModifierFactory());  
        // register factory for CheckCollisionModifier  
        TransformationManager::registerModifierFactory  
            (new CheckCollisionModifierFactory);  
    }  
}
```

Snippet 3-2

- The TransformationManager has to be registered for a callback

```
SystemCore::registerCoreComponentInitCallback(initCoreComponents);
```

Snippet 3-3

- Compile and run



JOHANNES KEPLER
UNIVERSITÄT LINZ

Netzwerk für Forschung, Lehre und Praxis

Transformation Management



interactive networked virtual reality system



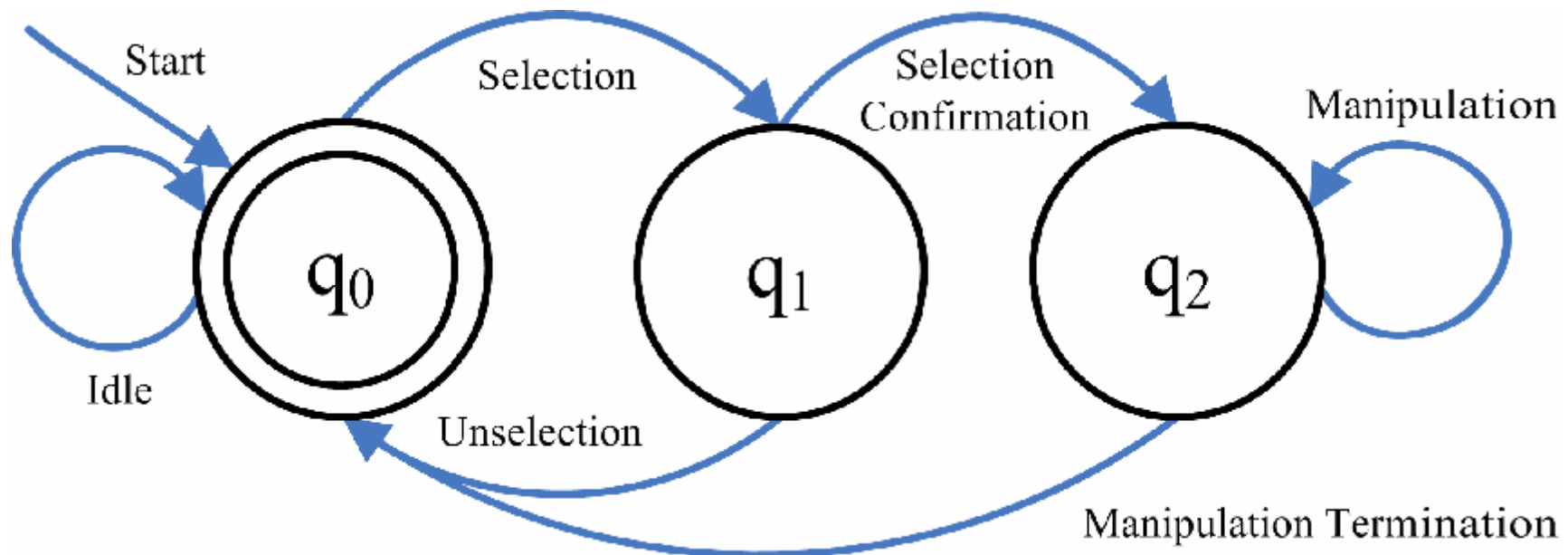
Chapter 4

Interaction

Where the user is able to pick up and drop boxes and benches in the town.

Interaction

- Implemented as a deterministic finite automaton (DFA)
 - Input alphabet Σ defined through components of the abstract input device and system states
 - $q = \{q_0 \text{ (Idle)}, q_1, \text{ (Selection)} q_2, \text{ (Manipulation)}\}$
 - Transition function δ defined through interaction techniques
 - Start- and end state = q_0





- Configuring the State Machine

```
<?xml version="1.0"?>
<!DOCTYPE interaction SYSTEM "http://dtd.inVRs.org/interaction_v1.0a4.dtd">
<interaction version="1.0a4">

  <stateActionModels>
    <selectionActionModel type="HighlightSelectionActionModel">
      <arguments>
        <arg key="modelType" type="string" value="OSG"/>
        <arg key="modelPath" type="string" value="box.osg"/>
      </arguments>
    </selectionActionModel>
    <manipulationActionModel type="HomerManipulationActionModel">
      <arguments>
        <arg key="usePickingOffset" type="bool" value="true"/>
      </arguments>
    </manipulationActionModel>
  </stateActionModels>

  <stateTransitionModels>
    <selectionChangeModel type="LimitRayCastSelectionChangeModel">
      <arguments>
        <arg key="rayDistanceThreshold" type="float" value="5"/>
      </arguments>
    </selectionChangeModel>
    <unselectionChangeModel type="LimitRayCastSelectionChangeModel">
      <arguments>
```

interaction.xml



Interaction



- Adding the Interaction Module to our Application
 - Set the path for the interaction configuration first

```
<path name="InteractionModuleConfiguration"  
    directory="config/modules/interaction/" />
```

general.xml

- Provide a configuration file for the Interaction module

```
<module name="Interaction" configFile="interaction.xml" />
```

modules.xml

- Retrieve the module in callback function

```
// store the Interaction as soon as it is initialized  
else if (module->getName() == "Interaction") {  
    interaction = (Interaction*)module;  
}
```

Snippet 4-1



Interaction



- Setting up the Transformation Management
 - For interaction the transformation pipe has to be altered again
 - In the navigation pipe the updated position has to write out the cursor position, which is always relative to the user

```
<modifier type="ApplyCursorTransformationModifier" />  
<modifier type="CursorTransformationWriter" />
```

modifiers.xml

- An additional pipe has to be configured, which takes as a source the Interaction module and as destination the WorldDatabase
- The pipe is opened by the modules when needed
- This pipe is the interaction pipe using modifiers for
 - Adding manipulation offset
 - Writing out the transformation

```
<pipe srcModuleName="InteractionModule" dstModuleName="WorldDatabase"  
  pipeType="Any" objectClass="Any" objectType="Any" objectId="Any"  
  fromNetwork="0">  
  <modifier type="ManipulationOffsetModifier"/>  
  <modifier type="TransformationDistributionModifier"/>  
  <modifier type="EntityTransformationWriter" />  
</pipe>
```

modifiers.xml



- Adding a Cursor Representation
 - Helpful to have a visual representation of the cursor for selection and manipulation
 - Paths for model and representation have to be set as well

```
<path name="CursorConfig"  
  path="config/systemcore/userdatabase/cursorRepresentation/" />  
<path name="CursorModelConfiguration"  
  path="config/systemcore/userdatabase/cursorModel/" />
```

general.xml

- Additionally the configuration files have to be set in the UserDatabase

```
<cursorRepresentation configFile="handRepresentation.xml" />  
<cursorTransformationModel configFile="homerCursorModel.xml" />
```

userDatabase.xml

- Invoking Interaction and Changing the Cursor Appearance
 - In the display loop the interaction has to be invoked for checking the transition functions, changing the state, writing transformations and event processing
 - The cursor is updated based on information of the state machine

```
interaction->step(dt);  
  
UserDatabase::updateCursors(dt);
```

Snippet 4-2

- Compile and execute



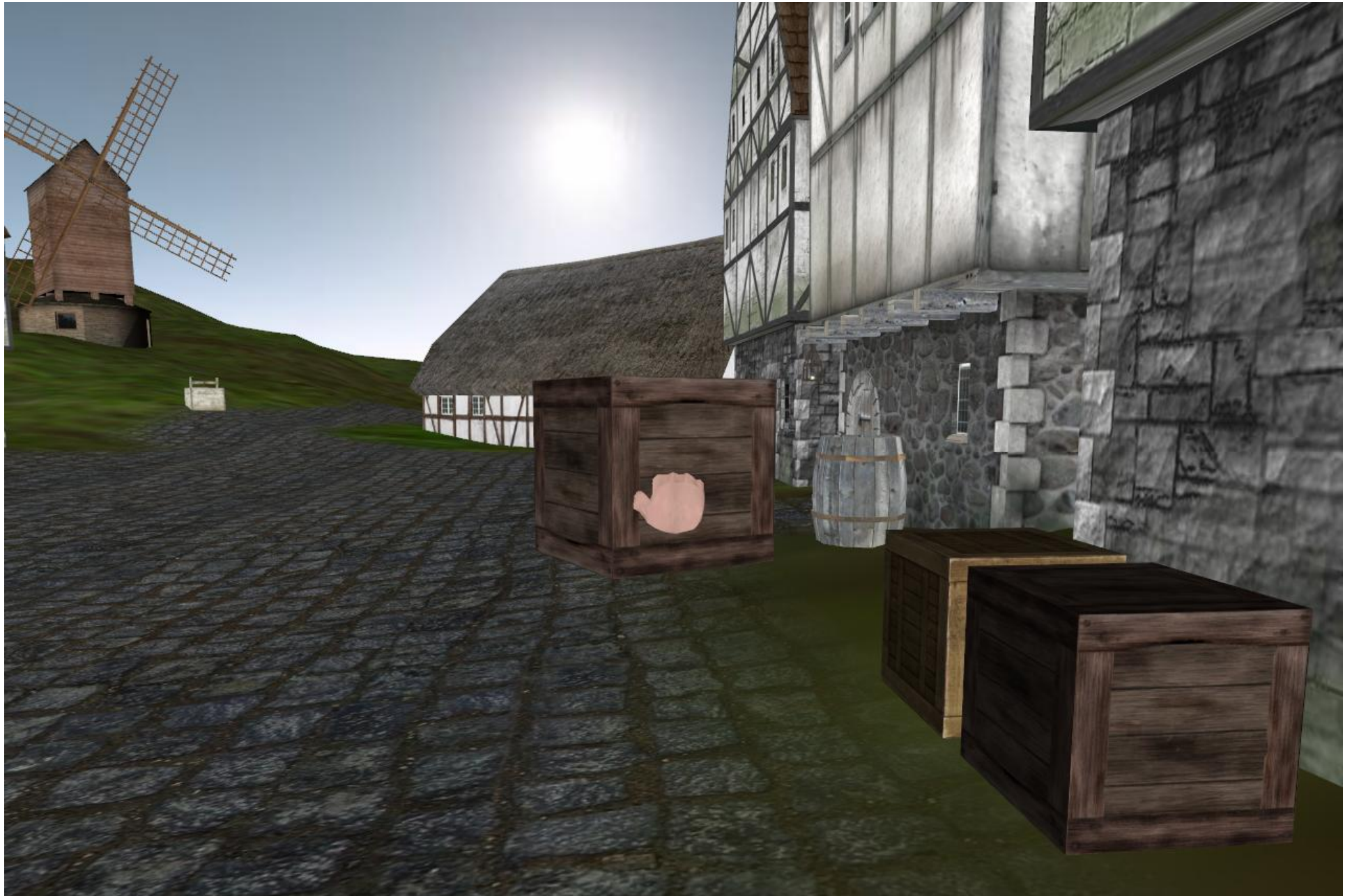
JOHANNES KEPLER
UNIVERSITÄT LINZ

Netzwerk für Forschung, Lehre und Praxis

Interaction



interactive networked virtual reality system



Chapter 5

Using Network Communication

Where the virtual world is shared with other participants and remote interaction and navigation can be perceived.



Using Network Communication



- Network Concepts
 - Module designed for exchangeability
 - Many implementations exist already
 - Standard module
 - Communication topology represents a complete graph
 - Databases fully replicated
 - Communication between components and network uses a high level interface
 - Sending and receiving of TransformationData and Events
 - Sending and receiving of user defined messages
 - Connection establishment and disconnecting

- Adding the Network Module to our Application
 - As usual set the path for the network configuration first

```
<path name="NetworkModuleConfiguration"  
    directory="config/modules/network/" />
```

general.xml

- Provide a configuration file for the Network module

```
<module name="Network" configFile="network.xml" />
```

modules.xml

- Retrieve the module in callback function

```
// store the NetworkInterface as soon as it is initialized  
else if (module->getName() == "Network") {  
    network = (NetworkInterface*)module;  
}
```

Snippet 5-1

- Connection establishment using the first command line argument
- Synchronization between the different instances (e.g. updates on the WorldDatabase)

```
// try to connect to network first command line argument is {hostname|IP}:port  
if (argc > 1) {  
    printf("Trying to connect to %s\n", argv[1]);  
    network->connect(argv[1]);  
}  
SystemCore::synchronize(); // synchronize both VEs
```

Snippet 5-2



Using Network Communication



- Using the Network Module

- An update on the SystemCore has to be triggered at the beginning of the display loop
- Internal events like updating the UserDatabase and synchronizing the VEs can be subsequently triggered in in the core

```
SystemCore::step(); //update the system core, needed for event handling Snippet 5-3
```

- The ports which are used for communication are defined in network.xml
 - TCP is typically used for Events
 - UDP is typically used for TransformationData

```
<?xml version="1.0"?>  
<!DOCTYPE network SYSTEM "http://dtd.inVRs.org/network_v1.0a4.dtd">  
<network version="1.0a4">  
  <ports TCP="8081" UDP="8082"/>  
</network>
```

network.xml

- Altering the Transformation Management

- In the interaction and navigation pipe a distributor has to be included
- The current value at this stage is distributed to remote users and passed inside a similar pipe



Using Network Communication

```
<modifier type="TransformationDistributionModifier" />
```

modifiers.xml

- An additional pipe for remote interaction input has to be set up
 - The attribute fromNetwork is in that case set to true

```
<pipe srcComponentName="InteractionModule" dstComponentName="WorldDatabase"  
  pipeType="Any" objectClass="Any" objectType="Any" objectId="Any"  
  fromNetwork="1">  
  <modifier type="EntityTransformationWriter" />  
</pipe>
```

modifiers.xml

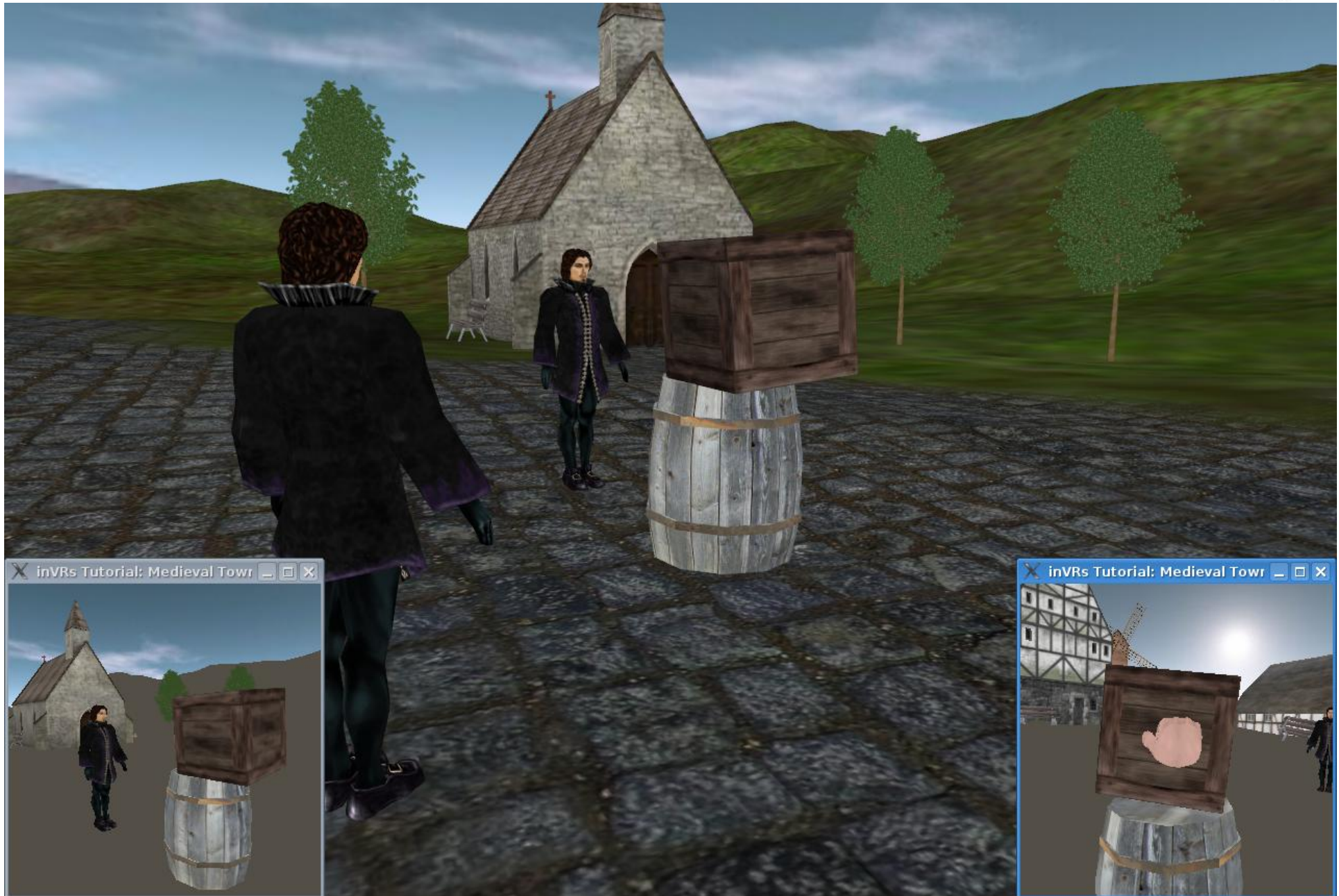
- An additional pipe for remote navigation input has to be set up
 - The attribute fromNetwork is in that case set to true

```
<pipe srcComponentName="NavigationModule" dstComponentName="  
  TransformationManager "  
  pipeType="Any" objectClass="Any" objectType="Any" objectId="Any"  
  fromNetwork="1">  
  <modifier type="UserTransformationWriter" />  
  <modifier type="AvatarTransformationWriter" >  
    <arguments>  
      <arg key="clipRotationToYAxis" type="bool" value="true" />  
    </arguments>  
  </modifier>  
</pipe>
```

modifiers.xml



Using Network Communication



Chapter 6

Developing own Application Logic

Where new code is introduced into the application to make the sails of a windmill turn.



- Own Application Logic
 - Goal: to manipulate a scene graph of an entity based on user input
 - Gather exposed user input in display loop
 - Variable containing a rotational speed is used
 - In case the defined button is pressed speed is increased up to a threshold
 - If the button is not pressed the speed will be decreased to zero

```
if (controller->getButtonValue(2)) { // the right mouse button is pressed
    windMillSpeed += dt*0.5;          // increase speed of the windmill
    if (windMillSpeed > 2*M_PI) {
        windMillSpeed = 2*M_PI;
    }
} else if (windMillSpeed > 0) {      // pressing mouse button stopped
    windMillSpeed -= dt*0.5;          // decrease speed of windmill
} else if (windMillSpeed < 0) {
    windMillSpeed = 0;
}
```

Snippet-6-1

- In next step the calculated speed has to be applied on the sails of the windmill model



Developing own Application Logic



- Own Application Logic
 - First get the entity from the WorldDatabase
 - Get the scene graph of the Entity
 - Get the sub scene graph of the previously retrieved scene graph with the name “Sails” (this name is stored in the loaded model)
 - Make sure it is a transformation node
 - Cast the *inVRs* scene graph node into an *inVRs* transformation node
 - Request the transformation from the node
 - Apply the rotational change to the transformation
 - Apply the final transformation on the transformation node



- Own application logic

```
if (windMillSpeed > 0) {                                // rotate sails
    // retrieve the windmill entity
    Entity* windMill = WorldDatabase::getEntityWithEnvironmentId(1, 27);
    ModelInterface* windMillModel = windMill->getVisualRepresentation();

    // retrieve the windmill's sails
    SceneGraphNodeInterface* sceneGraphNode =
        windMillModel->getSubNodeByName("Sails");

    // make sure this node is a transformation node
    assert(sceneGraphNode->getNodeType() ==
        SceneGraphNodeInterface::TRANSFORMATION_NODE);
    TransformationSceneGraphNodeInterface* transNode =
        dynamic_cast<TransformationSceneGraphNodeInterface*>(sceneGraphNode);
    assert(transNode);

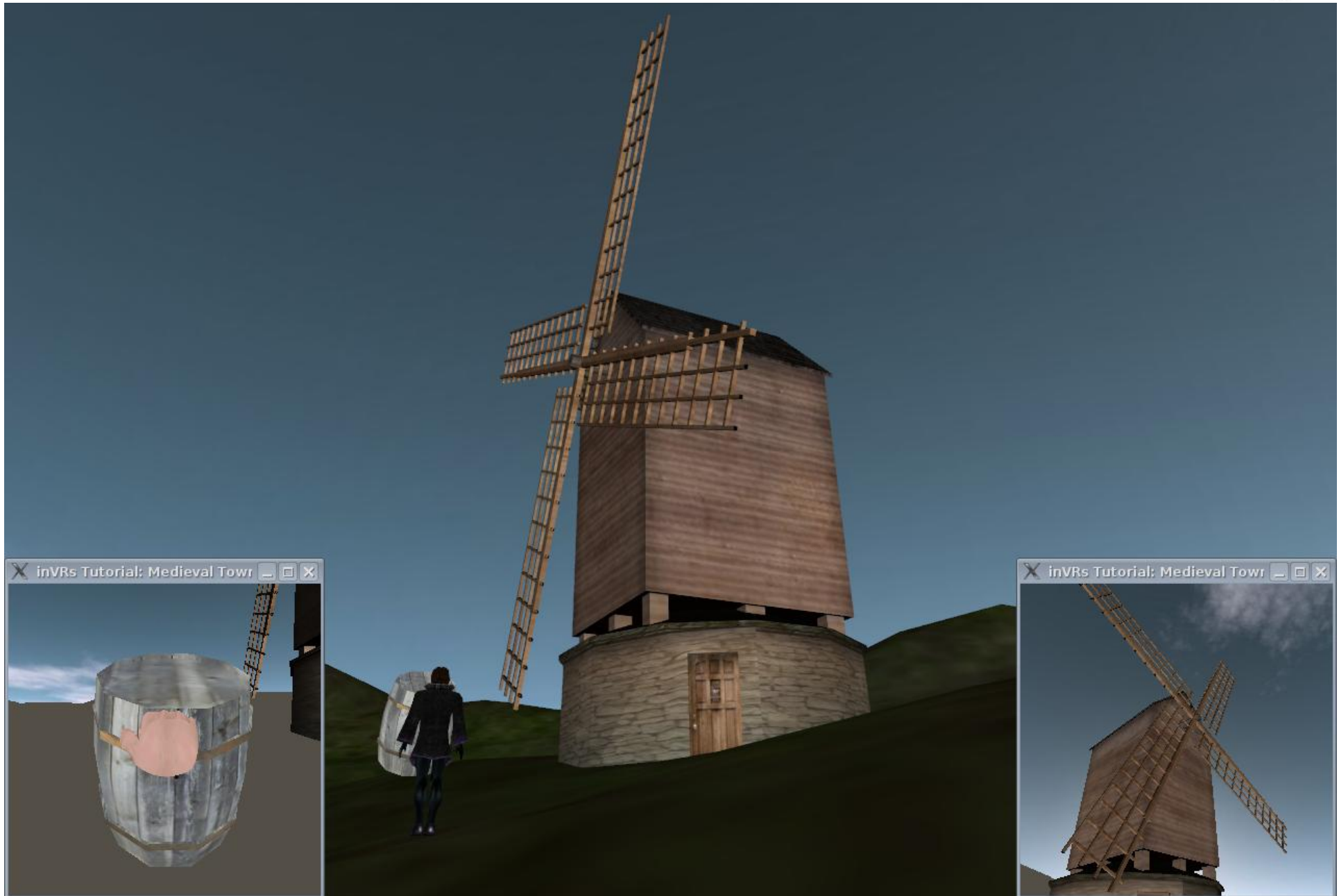
    // rotate the sails
    TransformationData trans = transNode->getTransformation();
    gmtl::AxisAnglef axisAngle(windMillSpeed*dt, 0, 0, 1);
    gmtl::Quatf rotation;
    gmtl::set(rotation, axisAngle);
    trans.orientation *= rotation;
    transNode->setTransformation(trans);
}
```

Snippet-6-1

- Recompile and execute



Developing own Application Logic



Outlook



Outlook

- Variety of additional tools are available
 - Modules
 - Physics Support (2D and 3D Physics)
 - Animation and Camera path
 - External Tools
 - Collaborative Editor
 - Scene Graph Specific Enhancements (OpenSG)
 - Avatars (with export from 3D Max, MAYA and Blender)
 - CAVESceneManager
 - Particle Wrapper
 - Skybox
 - 3D Menu System



Outlook



- Novel concepts
 - Clear distinction in the area of communication patterns
 - Events and transformations are handled independently
 - Transformation management allows for concurrent object manipulation
 - Composeable and clearly defined interaction and navigation
 - Automatic data distribution mechanism
 - Full abstraction from graphics, input, network, etc.; the developer should be able to focus on the application logic
 - Development and integration of networked physics module (Roland Landertshamer)
- Does not provide
 - Scripting support
 - Logic support

Acknowledgements

- Contributors
 - Architecture and Main Development
Christoph Anthes, Helmut Bressler, Roland Landertshamer, Marina Lenger
 - Tools
Helmut Garstenauer, Martin Garstenauer, Adrian Haffegee, Marlene Hochrieser, Roland Hopferwieser, Robert Owen, Stephan Reiter, Thomas Weberndorfer, Christian Wressnegger, Johannes Zarl



Bibliography



- Christoph Anthes; Paul Heinzlreiter; Gerhard Kurka & Jens Volkert, “Navigation Models for a Flexible, Multi-Mode VR Navigation Framework“, *ACM SIGGRAPH on Virtual Reality Continuum and Its Applications in Industry (VRCAI '04)*, ACM Press, 2004, pages 476-479
- Christoph Anthes; Roland Landertshamer; Helmut Bressler & Jens Volkert, “Managing Transformations and Events in Networked Virtual Environments“ *ACM International MultiMedia Modeling Conference (MMM '07)*, Springer, 2007, 4352, pages 722-729
- Christoph Anthes; Roland Landertshamer & Jens Volkert, “Physically-Based Interaction for Networked Virtual Environments.“, *International Conference on Computational Science (ICCS '07)*, Springer, 2007, 4488, pages 776-783
- Christoph Anthes & Jens Volkert, “inVRs - A Framework for Building Interactive Networked Virtual Reality Systems“, *International Conference on High Performance Computing and Communications (HPCC '06)*, Springer, 2006, 4208, pages 894-904



Bibliography



- Christoph Anthes; Alexander Wilhelm; Roland Landertshamer; Helmut Bressler & Jens Volkert, “Net”O”Drom -- An Example for the Development of Networked Immersive VR Applications“, *International Conference on Computational Science (ICCS '07)*, Springer, 2007, 4488, pages 752-759
- Helmut Bressler; Roland Landertshamer; Christoph Anthes & Jens Volkert, “An Efficient Physics Engine for Virtual Worlds“, *medi@terra '06*, 2006, pages 152-158
- Adrian Haffeggee; Ronan Jamieson; Christoph Anthes & Vassil N. Alexandrov, “Tools For Collaborative VR Application Development“, *International Conference on Computational Science (ICCS '05)*, Springer, 2005, 3516, pages 350-358